

SLCO3270

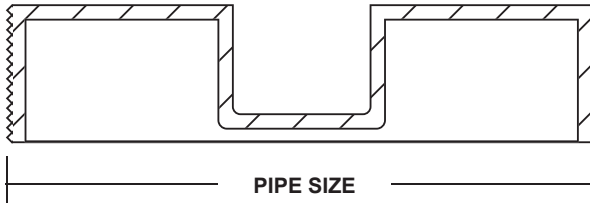
BRASS CLEANOUT PLUG

LOCATION: _____

Specification & Function

Specification: SUNLite SLCO3270 brass cleanout plug.

Function: Used in female threaded pipe openings where a cleanout is required.



Plug Type

SUFFIX	DESCRIPTION
-CS	Countersunk
-RH	Raised Head
-SH	Slot Head-Tapped

Pipe Size

SUFFIX	DESCRIPTION
-1.25	1.25" (32)
-1.5	1.5" (38)
-2	2" (51)
-2.5	2.5" (64)
-3	3" (76)
-3.5	3.5" (89)
-4	4" (102)
-5	5" (127)
-6	6" (152)
-8	8" (203)

Dim. In Inches		Approx. Wt. Lbs.
Product Designation	Pipe Size	
-1.25	1 1/4	0.50
-1.5	1 1/2	0.50
-2	2	0.75
-2.5	2 1/2	0.75
-3	3	1
-3.5	3 1/2	1
-4	4	1.50
-5	5	1.50
-6	6	2
-8	8	5

PROJECT: _____

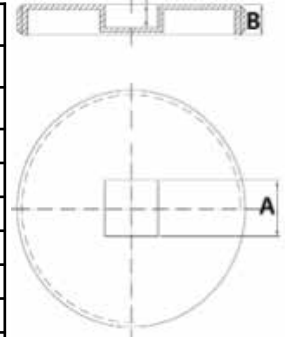
CONTRACTOR: _____

SLCO3270

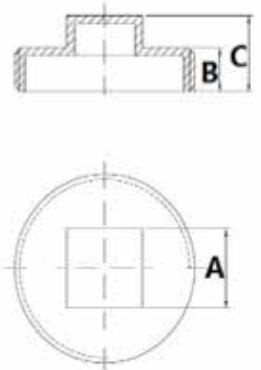
BRASS CLEANOUT PLUG

LOCATION: _____

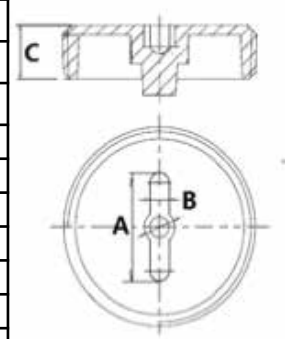
Part NO.	Description	DIMENSIONS					
		SIZE	A		B		
		in	in	mm	in	mm	
SLCO3270-CS-1.25	1-1/4" Countersunk Brass Plug	1-1/4"	0.55	14.0	0.31	7.9	
SLCO3270-CS-1.5	1-1/2" Countersunk Brass Plug	1-1/2"	0.66	16.8	0.39	10.0	
SLCO3270-CS-2	2" Countersunk Brass Plug	2"	0.79	20.0	0.43	11.0	
SLCO3270-CS-2.5	2-1/2" Countersunk Brass Plug	2-1/2"	0.71	18.0	0.44	11.2	
SLCO3270-CS-3	3" Countersunk Brass Plug	3"	0.83	21.0	0.44	11.3	
SLCO3270-CS-3.5	3-1/2" Countersunk Brass Plug	3-1/2"	1.22	31.0	0.44	11.3	
SLCO3270-CS-4	4" Countersunk Brass Plug	4"	1.18	30.0	0.47	12.0	
SLCO3270-CS-5	5" Countersunk Brass Plug	5"	1.26	32.0	0.51	13.0	
SLCO3270-CS-6	6" Countersunk Brass Plug	6"	1.22	31.0	0.55	14.0	
SLCO3270-CS-8	8" Countersunk Brass Plug	8"	1.26	32.0	0.91	23.0	



Part NO.	Description	DIMENSIONS						
		SIZE	A		B		C	
		in	in	mm	in	mm	in	mm
SLCO3270-RH-1.25	1-1/4" Raised Head Brass Plug	1-1/4"	0.72	18.2	0.40	10.2	0.68	17.4
SLCO3270-RH-1.5	1-1/2" Raised Head Brass Plug	1-1/2"	0.77	19.6	0.43	11.0	0.75	19.0
SLCO3270-RH-2	2" Raised Head Brass Plug	2"	0.94	24.0	0.43	11.0	0.79	20.0
SLCO3270-RH-2.5	2-1/2" Raised Head Brass Plug	2-1/2"	1.02	26.0	0.39	10.0	0.76	19.2
SLCO3270-RH-3	3" Raised Head Brass Plug	3"	1.18	30.0	0.44	11.3	0.85	21.5
SLCO3270-RH-3.5	3-1/2" Raised Head Brass Plug	3-1/2"	1.46	37.0	0.44	11.3	0.84	21.3
SLCO3270-RH-4	4" Raised Head Brass Plug	4"	1.34	34.0	0.43	11.0	0.87	22.0
SLCO3270-RH-5	5" Raised Head Brass Plug	5"	1.38	35.0	0.49	12.5	0.93	23.5
SLCO3270-RH-6	6" Raised Head Brass Plug	6"	1.36	34.5	0.57	14.5	1.04	26.5
SLCO3270-RH-8	8" Raised Head Brass Plug	8"	1.57	40.0	0.91	23.0	1.81	46.0



Part NO.	Description	DIMENSIONS						
		SIZE	A		B		C	
		in	in	mm	in	mm	in	mm
SLCO3270-SH-1.25	1-1/4" Slot Head Brass Plug - Tapped	1-1/4"	1.06	27.0	0.24	6.0	0.63	16.0
SLCO3270-SH-1.5	1-1/2" Slot Head Brass Plug - Tapped	1-1/2"	1.06	27.0	0.24	6.0	0.63	16.0
SLCO3270-SH-2	2" Slot Head Brass Plug - Tapped	2"	1.26	32.0	0.24	6.0	0.63	16.0
SLCO3270-SH-2.5	2-1/2" Slot Head Brass Plug - Tapped	2-1/2"	1.26	32.0	0.24	6.0	0.63	16.0
SLCO3270-SH-3	3" Slot Head Brass Plug - Tapped	3"	1.85	47.0	0.24	6.0	0.77	19.5
SLCO3270-SH-3.5	3-1/2" Slot Head Brass Plug - Tapped	3-1/2"	2.13	54.0	0.24	6.0	0.79	20.0
SLCO3270-SH-4	4" Slot Head Brass Plug - Tapped	4"	2.24	57.0	0.24	6.0	0.89	22.5
SLCO3270-SH-5	5" Slot Head Brass Plug - Tapped	5"	2.44	62.0	0.54	13.6	0.98	25.0
SLCO3270-SH-6	6" Slot Head Brass Plug - Tapped	6"	2.44	62.0	0.59	15.0	0.98	25.0
SLCO3270-SH-8	8" Slot Head Brass Plug - Tapped	8"	2.44	62.0	0.59	15.0	0.98	25.0



PROJECT: _____

CONTRACTOR: _____