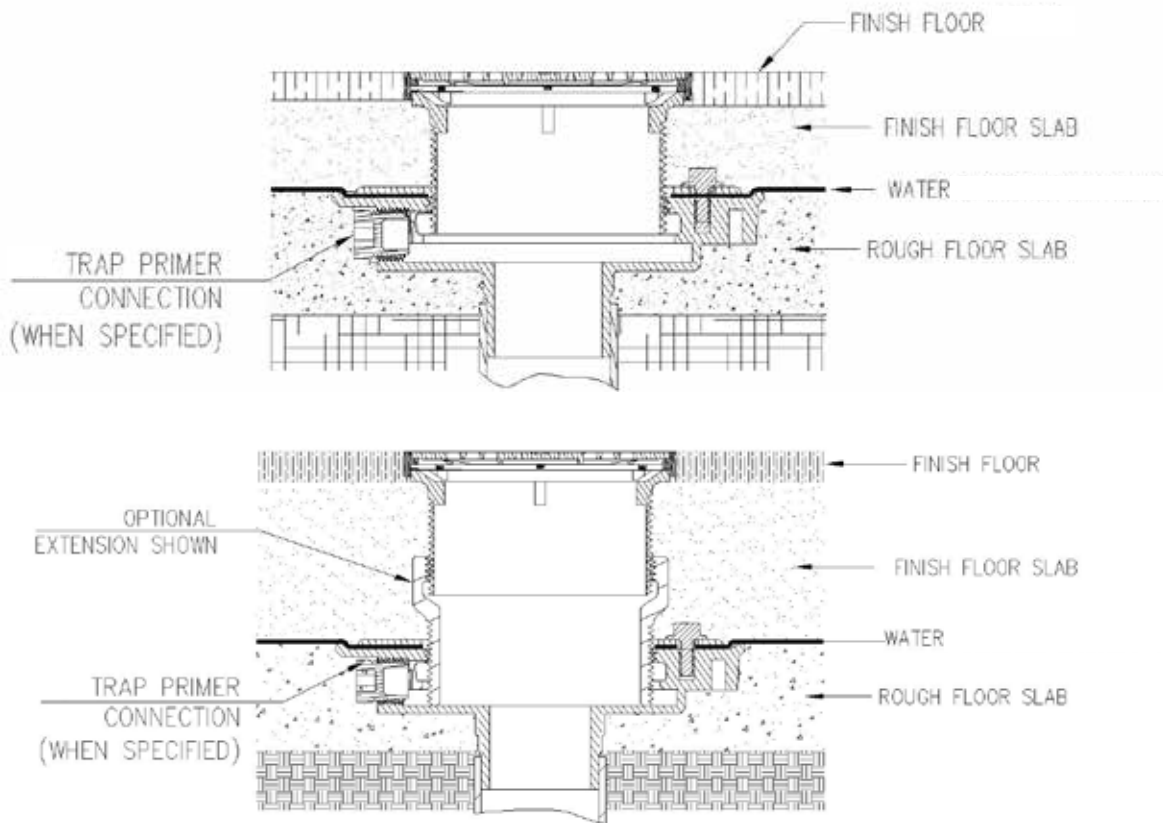




FD1000 FLOOR DRAIN INSTALLATION INSTRUCTIONS



INSTALLATION INSTRUCTIONS FOR FD1000

The Sun FD1000 Floor Drain can be installed in water proof membrane, non-membrane floor and shower construction. The drainage pipe is run to an elevation where the finish drain top will be slightly below the finish floor elevation. It is recommended that the strainer be initially installed at the mid-point into the body to allow any required adjustments. Dimensional data for all drain heights and outlet types are shown on Sun Submittal Drawings and the Sun Drainage website.

The drain body is secured to the pipe with any of three connections; Threaded, No-Hub, or Push On. The type of connection should be specified upon ordering any Sun drain and the O-ring or gasketed joints shall comply with ASTM C564,C1440,or CSA B602. Once the drain is set and leveled in place, the initial concrete sub-floor is poured to an elevation level with the top flange of the drain body. The waterproofing membrane is then installed to the point where the clamping flange can create the seal. The clamping flange is secured to the body by bolts. Omit this step if the installation has no membrane or the clamping collar isn't required. The strainer is then screwed into the body and the finished floor is poured to finished grade. The finished surface of the strainer should be protected through all phases of construction by the use of cardboard, tape or other protective materials applied by the plumber.

#XSFD1000 SUN Drainage Floor Drain Sheet Rev. A.11/2016
12600 Cardinal Meadow • Sugar Land, TX 77478
www.sundrainage.com

Note - Dimensional Data (inches and mm) are Subject to Manufacturing Tolerances and Change without Notice.