

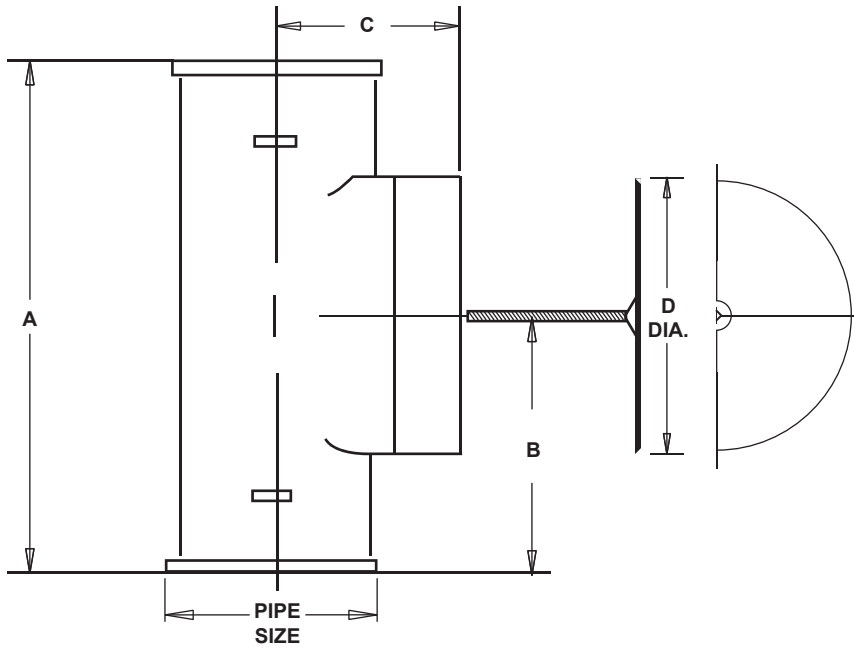
# CO3250-COT CLEANOUT TEE WITH ROUND ACCESS COVER

LOCATION: \_\_\_\_\_

## Specification & Function

**Specification:** SUN® CO3250-COT wall cleanout with round stainless steel access cover and center screw.

**Function:** Used in concealed drainage lines where a cleanout is required. Round cover provides finished appearance.



### Diameter

SUFFIX	DESCRIPTION
<input type="checkbox"/> -6	6" (153) SS Dia.
<input type="checkbox"/> -8	8" (203) SS Dia.
<input type="checkbox"/> -10	10" (254) SS Dia.

### Options

SUFFIX	OPTIONAL VARIATIONS
<input type="checkbox"/> -COT2	No-Hub Cleanout Tee, 2"
<input type="checkbox"/> -COT3	No-Hub Cleanout Tee, 3"
<input type="checkbox"/> -COT4	No-Hub Cleanout Tee, 4"
<input type="checkbox"/> -COT6	No-Hub Cleanout Tee, 6"
<input type="checkbox"/> -G	Galvanized Cast Iron Parts

Pipe Size	Dimension In Inches				Approx. Wt. Lbs.
	A	B	C	D	
2	6 3/8	3 3/16	2	6	4
3	7 3/4	3 7/8	2 11/16	6	5
4	8 7/8	4 7/16	3	8	9
5	11 1/2	5 3/4	4 1/2	8	16
6	12 1/2	6 1/4	5	10	20
8	15 1/4	7 5/8	6	10	36

PROJECT: \_\_\_\_\_

CONTRACTOR: \_\_\_\_\_