

**CO3250-CO**

**WALL CLEANOUT WITH ROUND ACCESS COVER**

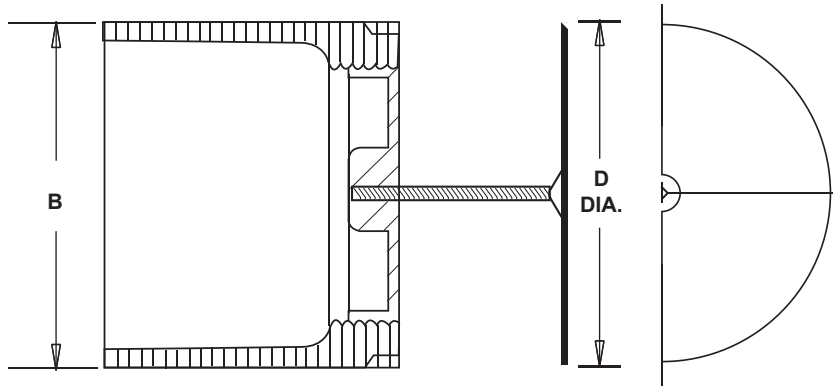
**LOCATION:**

---

**Specification & Function**

**Specification:** SUN® CO3250-CO wall cleanout with round stainless steel access cover and center screw.

**Function:** Used at a hubless connection of drainage piping where a cleanout is required. Round cover provides finished appearance.



**Diameter**

SUFFIX	DESCRIPTION
<input type="checkbox"/> -6	6" (153) SS Dia.
<input type="checkbox"/> -8	8" (203) SS Dia.
<input type="checkbox"/> -10	10" (254) SS Dia.

**Options**

SUFFIX	OPTIONAL VARIATIONS
<input type="checkbox"/> -CO2	No-Hub Cleanout Ferrule, 2"
<input type="checkbox"/> -CO3	No-Hub Cleanout Ferrule, 3"
<input type="checkbox"/> -CO4	No-Hub Cleanout Ferrule, 4"
<input type="checkbox"/> -CO6	No-Hub Cleanout Ferrule, 6"
<input type="checkbox"/> -G	Galvanized Cast Iron Parts

Dim. In Inches		Approx. Wt. Lbs.
Pipe Size B	D	
2	6	1
3	6	1
4	8	2
6	10	5

**PROJECT:**

---

**CONTRACTOR:**

---