

# CO3230

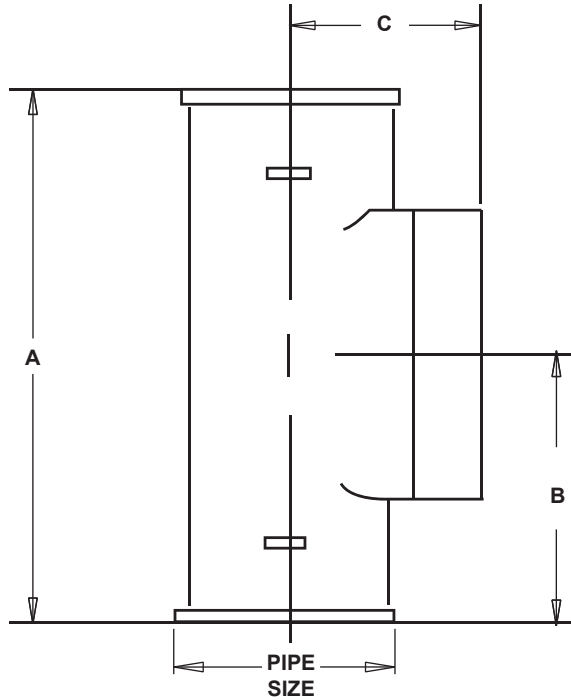
## CLEANOUT TEE WITH PLUG

LOCATION: \_\_\_\_\_

### Specification & Function

**Specification:** SUN® CO3230 Cleanout Tee, coated cast iron body with gas and watertight threaded plug.

**Function:** Used in concealed drainage lines where a cleanout is required.



### Pipe Size

SUFFIX	DESCRIPTION
<input type="checkbox"/> 2	2" (51) Pipe Size
<input type="checkbox"/> 3	3" (76) Pipe Size
<input type="checkbox"/> 4	4" (102) Pipe Size
<input type="checkbox"/> 5	5" (127) Pipe Size
<input type="checkbox"/> 6	6" (153) Pipe Size
<input type="checkbox"/> 8	8" (203) Pipe Size

### Outlet Type

SUFFIX	DESCRIPTION
<input type="checkbox"/> NH	No Hub

### Options

SUFFIX	OPTIONAL VARIATIONS
<input type="checkbox"/> -G	Galvanized Cast Iron

Pipe Size	Diminsion In Inches			Approx. Wt. Lbs.
	A	B	C	
2	6 3/8	3 3/16	2	4
3	7 3/4	3 7/8	2 11/16	5
4	8 7/8	4 7/16	3	9
5	11 1/2	5 3/4	4 1/2	16
6	12 1/2	6 1/4	5	20
8	15 1/4	7 5/8	6	36

PROJECT: \_\_\_\_\_

CONTRACTOR: \_\_\_\_\_