

LC5050

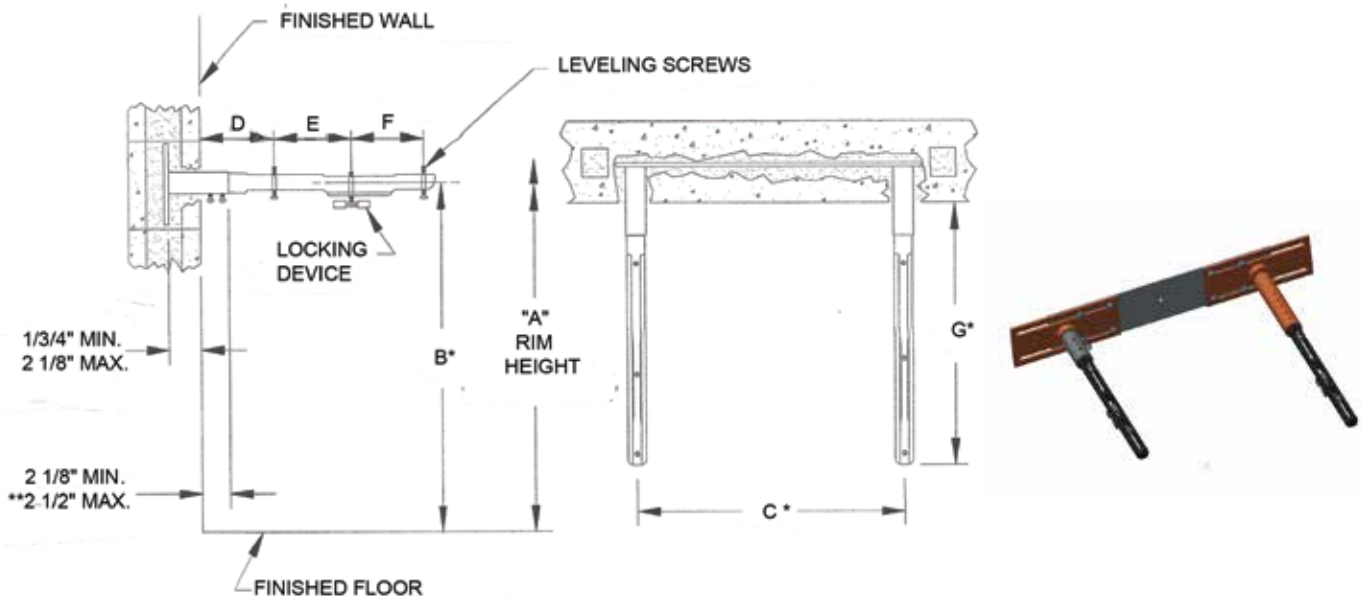
CONCEALED ARM WALL SUPPORTED LAVATORY CARRIER

LOCATION: _____

Specification & Function

Specification: SUN® LC5050 wall supported lavatory carrier with 4" steel sleeves, concealed arms, adjustable width wall support plate.

Function: Used to support wall hung fixtures with load bearing plate carrier concealed in and support by concrete wall.



* Variable Dimension. Depends on the fixture
 ** Width Standard Sleeve Length of 4", for
 Longer Lengths Specify 9" Sleeve.

NOTE: The rough-in dimensions listed on this drawing are based on current information available to SUN DRAINAGE by the fixture manufacturers. We recommend that you verify these dimensions with the fixture manufacturer. We will not accept responsibility for rough-in dimension changes by the fixture manufacturer.

ROUGHING-IN TABLE

FIXTURE MFG.		NAME		NUMBER		SIZE			
A	B	C	D	E	F	G	J	K	

- | | |
|-----------------------------|-------------------|
| SIZE | DESCRIPTION |
| <input type="checkbox"/> -5 | 15.75" Arm Length |
| <input type="checkbox"/> -6 | 18.50" Arm Length |
| <input type="checkbox"/> -7 | 22.25" Arm Length |

NOTE: *This dimension can be increased when fixture support is to be installed behind the wall. (Specify when required and wall thickness).

PROJECT: _____

CONTRACTOR: _____